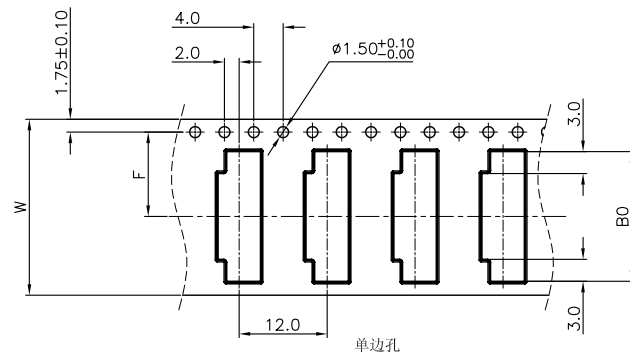
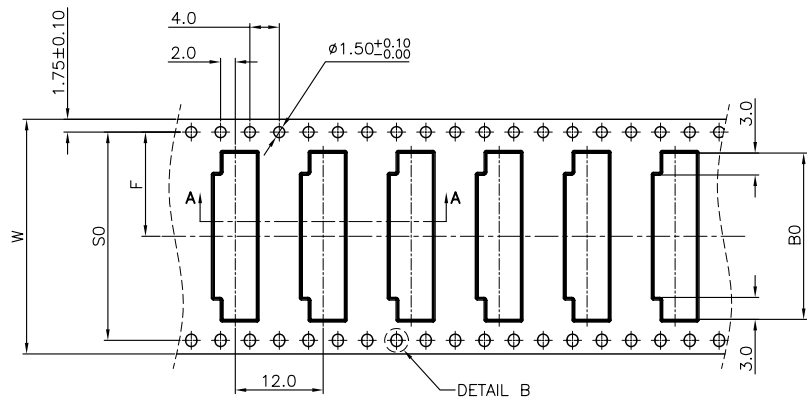
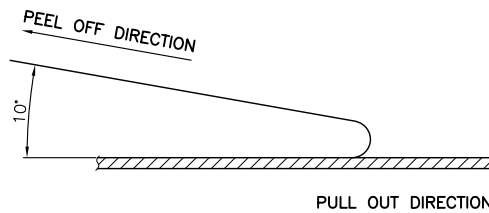
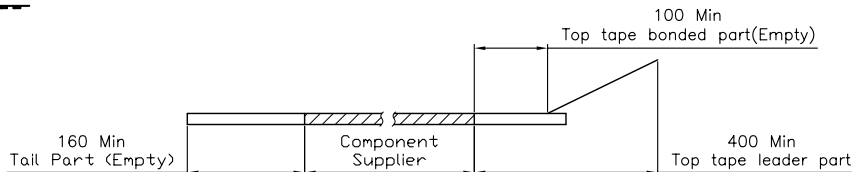
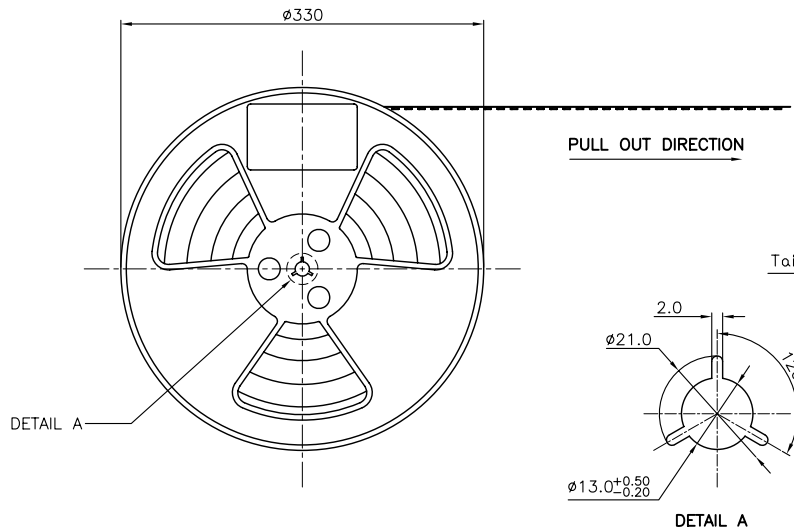
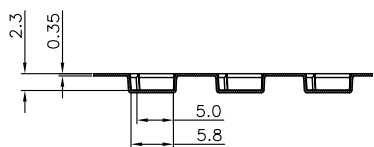


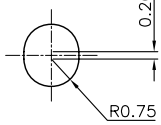
- NOTES:
1. 10 SPROCKET HOLE PITCH CUMULATIVE TOLERANCE.±0.20mm
  2. CARRIER CAMBER NOT TO EXCEED 1mm IN 250mm.
  3. ALL DIMENSIONS MEET EIA-481-C REQUIREMENTS.
  4. MATERIAL: BLACK ANTI-STATIC POLYSTYRENE.
  5. THICKNESS: 0.35 ± 0.05 mm.
  6. PACKING LENGTH PER 13" REEL: 24.60METERS.
  7. COMPONENT LOAD PER 13" REEL: 2000PCS
  8. PEELING OFF FORCE OF TOP TAPE 0.1N~0.7N(10.2gf~100gf).



CKTS	B0±0.10	W	W1	F	S0±0.10
4	8.70				
5	9.20				
6	9.70	16+0.3/-0	16.4	7.5±0.10	
7	10.20				
8	10.70				
9	11.20				
10	11.70				
11	12.20				
12	12.70				
13	13.20				
14	13.70				
15	14.20				
16	14.70	24+0.3/-0	24.4	11.5±0.10	
17	15.20				
18	15.70				
19	16.20				
20	16.70				
21	17.20				
22	17.70				
23	18.20				
24	18.70				
25	19.20				
26	19.70				
27	20.20				
28	20.70	32±0.30	32.4	14.2±0.10	28.4
29	21.20				
30	21.70				
31	22.20				
32	22.70				
33	23.20				
34	23.70				
35	24.20				
36	24.70				
37	25.20				
38	25.70				
39	26.20				
40	26.70				
41	27.20				
42	27.70				
43	28.20				
44	28.70				
45	29.20	44±0.30	44.4	20.2±0.15	40.4
46	29.70				
47	30.20				
48	30.70				
49	31.20				
50	31.70				
51	32.20				
52	32.70				
53	33.20				
54	33.70				
55	34.20				
56	34.70				
57	35.20				
58	35.70	56±0.30	56.4	26.2±0.10	52.4
59	36.20				
60	36.70				



SECTION A-A  
SCALE 1:1



DETAIL B  
SCALE 5:1

CLASSIFICATION DIMENSION(尺寸类别):  
FA1(首次检验): ⊕ To ⊕  
■ MARK IS MAJOR DIM(重点尺寸标示)  
⊙ MARK IS CRITICAL DIM(Cpk&Cp标示)

Tolerance (未注公差)  
0.0 ±0.10 0° ±3°  
0.00 ±0.05 0°0 ±2°  
0.000 ±0.02 0°0.00 ±1°

Project View  
(投影视角)  
1 OF 1

## 深圳市钜硕电子有限公司

Product Name(产品名称):  
0.5Pitch H=2.0 FPC 拉拔卧式SMT型4代.载带

Product No(产品料号):  
EB-580XXX230-00

Drawing No(图面编号):  
DNE00019-1

Date(日期):  
2011/06/01

Designer(设计):  
Allan 06/01/11

Checked(审核):

Approved(核准):

Rev	Change Description	Date	Revisor
1.0	初版发行	2011/06/01	Allan
版本	变更内容	日期	制/修订人

